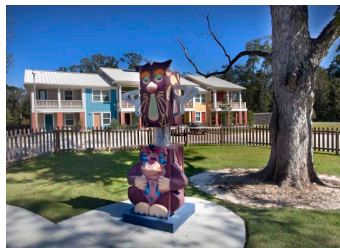
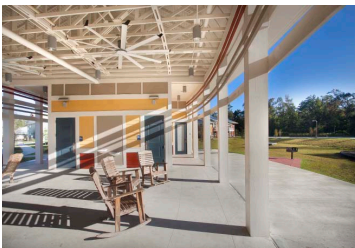


# SPECIAL OFFERING

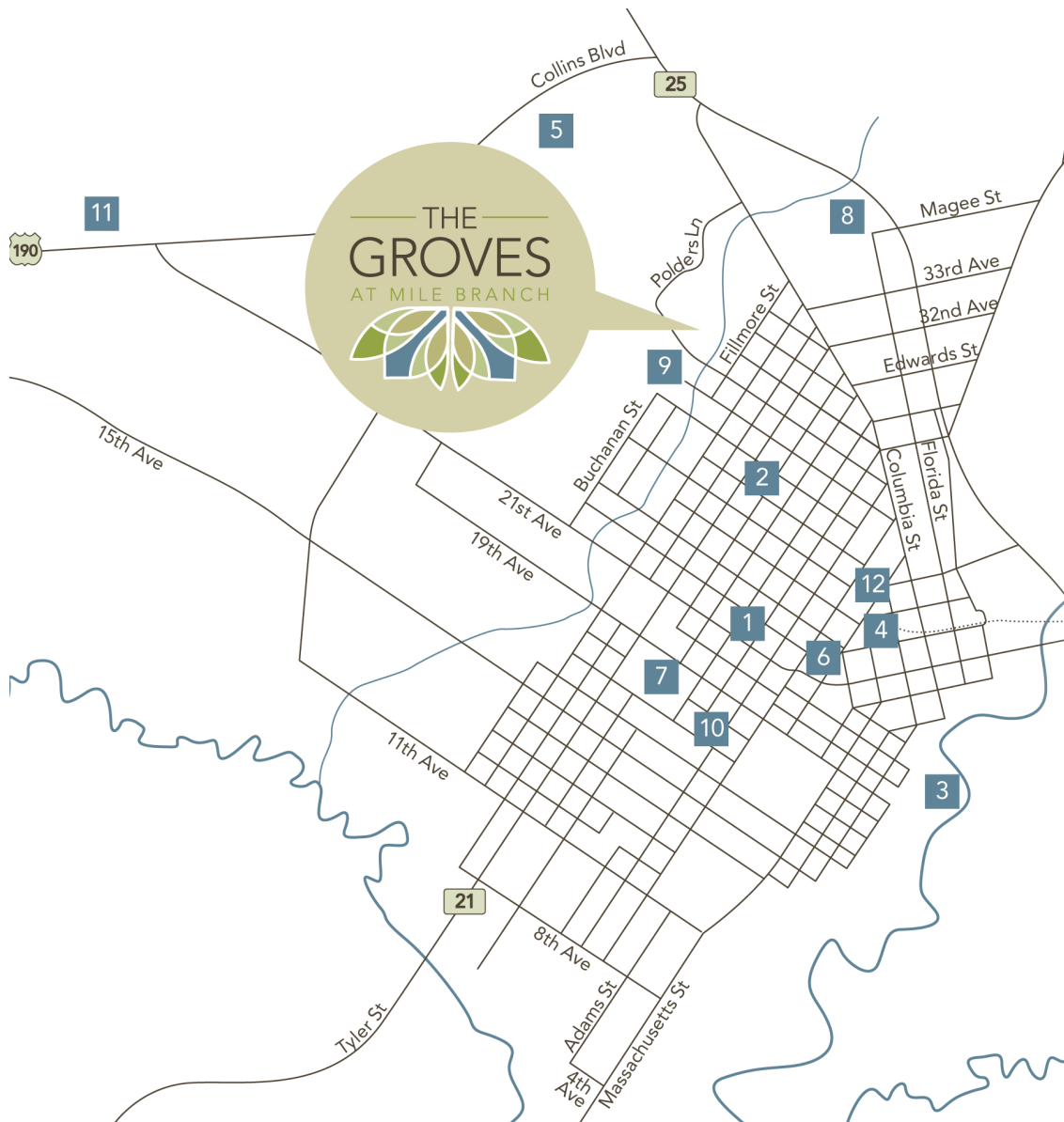
## 25 SINGLE FAMILY LOTS

### THE GROVES AT MILE BRANCH



Be a part of the newest planned unit development near downtown Covington. 25 single family lots are available in a unique community of single and multi-family homes, all designed around a 2-acre central park and community center. An owner's association and CCR's ensure the continuation of high quality architectural standards and livability of the community. Minimum lot sizes are 42 x 92 and are available at a special price of \$29,500 each, with discounts available to builders on the purchase of 3 or more lots. Amenities of the Groves at Mile Branch include community center, performance stage, barbeque stations throughout, citrus garden, community orchard, paw park & tot lot, and Southern architectural styles.

For more information please contact: Lizby Eustis, CCIM, Keller Williams Realty Services, Inc.  
1522 W. Causeway Approach, Mandeville, LA | [leustis@att.net](mailto:leustis@att.net) | [www.lizbyeustis.com](http://www.lizbyeustis.com) | P: 985.727.7000 | C: 985.966.2712



- |                                |                                       |
|--------------------------------|---------------------------------------|
| 1 Covington Branch Library     | 7 Covington Elementary School         |
| 2 Peter Atkins Park            | 8 Lyon Elementary School              |
| 3 Bogue Falaya River and Park  | 9 Pine View Middle School             |
| 4 Tammany Trace Rail-Trail     | 10 William Pitcher Junior High School |
| 5 Covington Recreation Complex | 11 Covington High School              |
| 6 Historic Downtown Covington  | 12 Delgado Community College          |

424 PURSLANE DRIVE  
COVINGTON, LOUISIANA

70433



[grovesatmilebranch.com](http://grovesatmilebranch.com)

/grovesatmilebranch

P: 985-327-5751

F: 985-327-5492



For more information please contact:

Lizby Eustis, CCIM  
Keller Williams Realty Services, Inc.  
leustis@att.net www.lizbyeustis.com  
1522 West Causeway Approach  
Mandeville, LA 70471

Office: 985.727.7000 Cell: 985.966.2712

